

Establishment of the Japan Nuclear Safety Institute (JANSI)

1. Introduction

In light of the Fukushima Daiichi Nuclear Power Plant accident of March 2011, in order to raise nuclear power plant safety even higher including countermeasures for severe accidents, the Japan Nuclear Technology Institute has been dissolved and the Japan Nuclear Safety Institute (JANSI) has been newly established to lead operators while targeting even higher safety and making effective use of the knowledge and expertise which have been developed thus far.

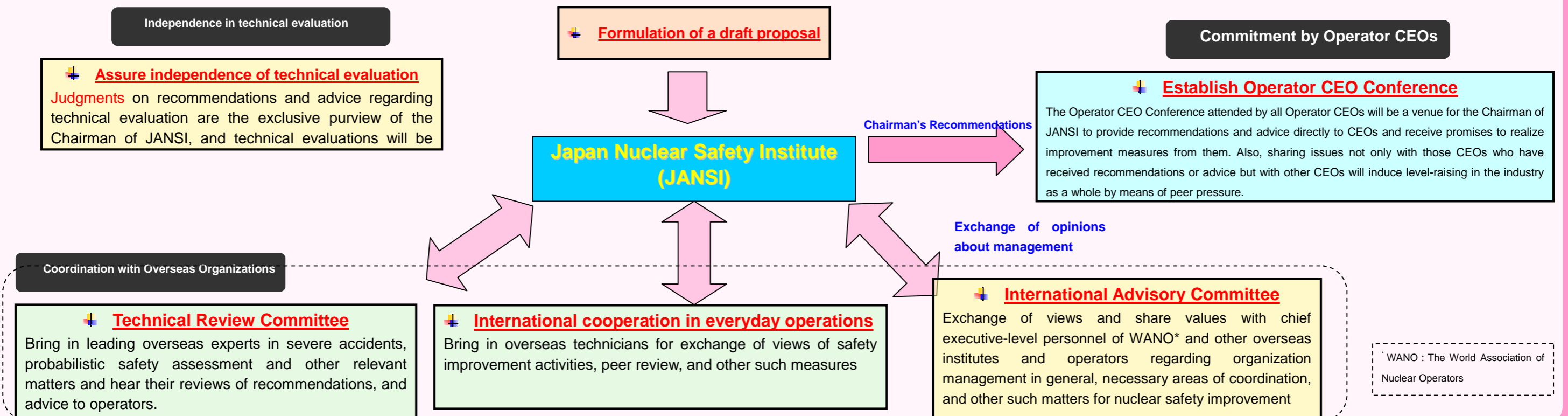
2. The Mission and Activities of JANSI

In order to improve the safety of nuclear power plant, it is necessary for operators themselves to engage in continuing measures to improve safety, and to engage in untiring pursuit of the world's highest level of safety. In addition, safety improvement must not become a self-centered, self-satisfied activity of the operator alone. Rather, it requires constant evaluation from different perspectives.

JANSI will create mechanisms and systems for independence in technical evaluation that will not be influenced by the operator's intentions and as well as providing operators with objective evaluations, recommendations, and advice. Through its support of operators' safety improvement activities, JANSI will raise the level of nuclear safety across Japan as a whole.

**Mission: Pursue the world's highest level of safety in Japan's nuclear power Industry
- Untiring Pursuit of the Highest Standards of Excellence -**

Mechanism



Initiatives

Evaluation, recommendations advice, and support for safety improvement measures

Gather and analyze the latest information inside and outside of Japan and provide recommendations for operators to raise their nuclear safety level so that each operator can pursue initiatives towards excellence.

The initial priority will be on dealing with severe accidents (accidents causing severe core damage beyond design basis), but the scope will be expanded in future to include measures addressing design basis events.

Evaluation of nuclear power facilities and related recommendations, advice and support

Conduct verification on the operating conditions at nuclear power facilities (NPFs) by periodic peer review and reviews on specific themes. Through comparison with best practices, evaluate the condition of equipment and operational state of nuclear power facilities, as well as initiatives about the strength of their safety culture and improvement. Make recommendations and give support for raising levels in those areas.

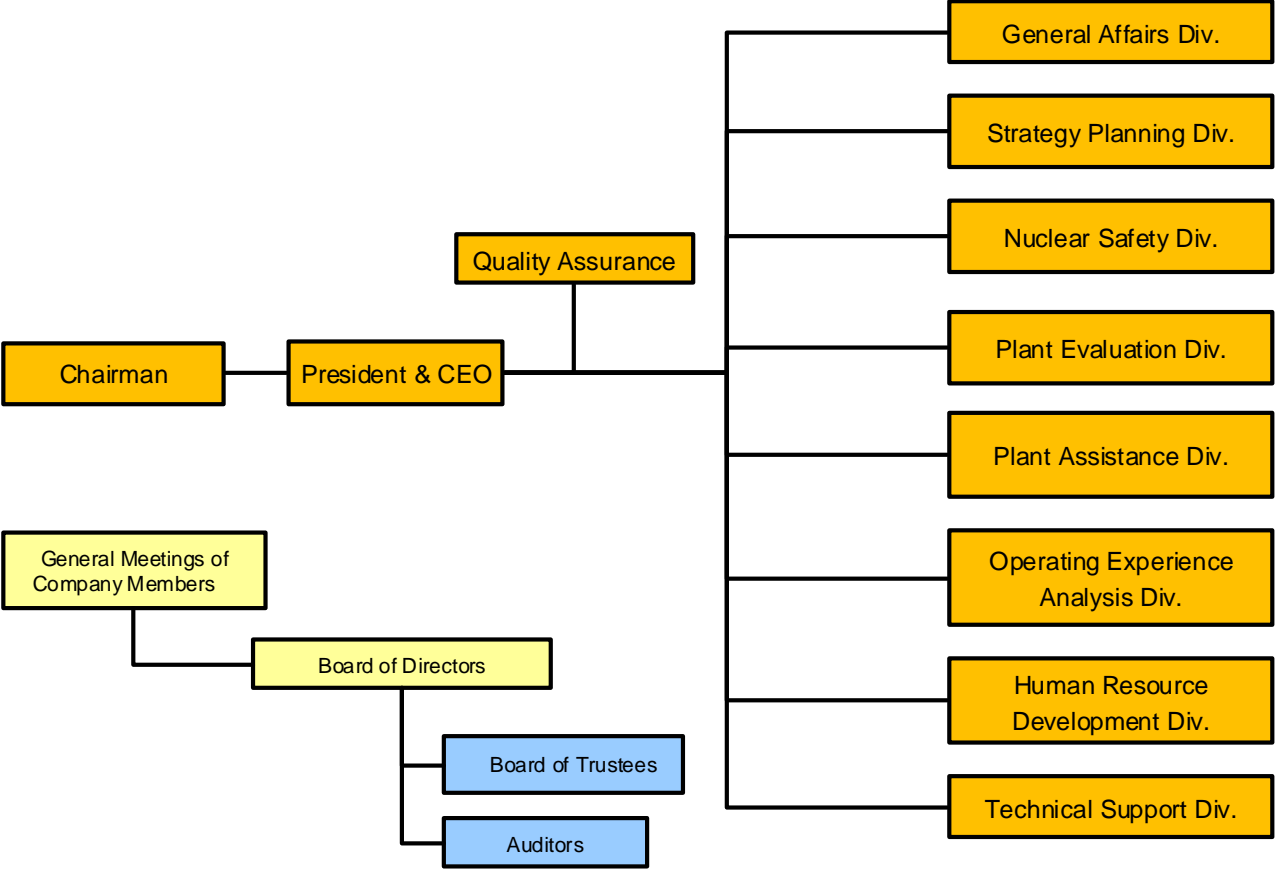
Periodically dispatch senior representative to NPFs, provide support, and take steps to raise relevant levels at NPFs by establishing communications with NPFs executives, introducing good practices from other NPFs, and other such means.

Promotion of other related business

Other activities to support those on the left such as analyze information on trouble, prepare standards and develop human resources.

Organization Chart of JANSI

Attachment-1



Japan Nuclear Safety Institute Board of Directors

Chairman	Shojiro Matsuura	Representative Director
President & CEO	Takao Fujie	Representative Director
Director	Kiyoshi Naruse	Strategy Planning Division Manager
Director	Akio Fukuda	General Affairs Division Manager
Director	Akihide Kugo	Human Resource Development Division Manager
Director	Shigeki Iwane	(Vice President, Kansai Electric Power Co. Inc.)
Director	Manabu Ouchi	(Chairman of Japan Aircraft Pilot Association)
Director	Tomohiko Ohno	(Executive Vice President, Chubu Electric Power Co. Inc.)
Director	Masaharu Hanyu	(Vice President and Executive Officer, Hitachi Ltd.)
Director	Yoshinori Fukahori	(Executive Vice President, Kyushu Electric Power Co. Inc.)
Director	Shigero Masamori	(Executive Vice President, Mitsubishi Heavy Industries, Ltd.)
Director	Hayaichi Yokoyama	(Senior Vice President, Central Research Institute of Electric Power Industry)

Auditor	Kiyoshi Okamura	(Vice President, Toshiba Corporation)
Auditor	Mutsutaka sunematsu	(Adviser, Nuclear Fuel Industries, Ltd.)

For information regarding our business program for FY2012, access Japan Nuclear Safety Institute homepage <http://www.genanshin.jp/>

Contact information: Japan Nuclear Safety Institute
Nobuyuki Onishi
Operations Department
Tel: +81-3-5440-3601
Fax: +81-3-5440-3606